

CASE STUDY

QUBE LOGISTICS



QUBE

CLIENT:

QUBE Logistics

PROJECT:

Head Office Pallet Racking

LOCATION:

Fremantle, Western Australia

CONTRACT VALUE:

\$300,000

PROJECT COMPLETED:

2019

CLIENTS BRIEF:

QUBE engaged DMD to assist their architects in the initial designing phase of their new warehouse facility in North Fremantle. The racking design was configured to QUBE's specifications in regards to the storage volume required and DMD worked with their architects to ensure the designed layout of the warehouse was adequate and access doors and fire hydrants etc were located correctly to allow for racking installation and maximisation of space utilisation.

THE CHALLENGES:

DMD had to work to a tight timeschedule to ensure that planning and installation was on schedule for building handover to QUBE. The size and weight requirements for their storage capacity was also adhoc pending on what their clients had in transit, therefore the system had to be interchangeable and universal. The environment they operated in also required the racking to be robust and withstand harsh environmental conditions and accidental impact.

DMD'S SOLUTION:

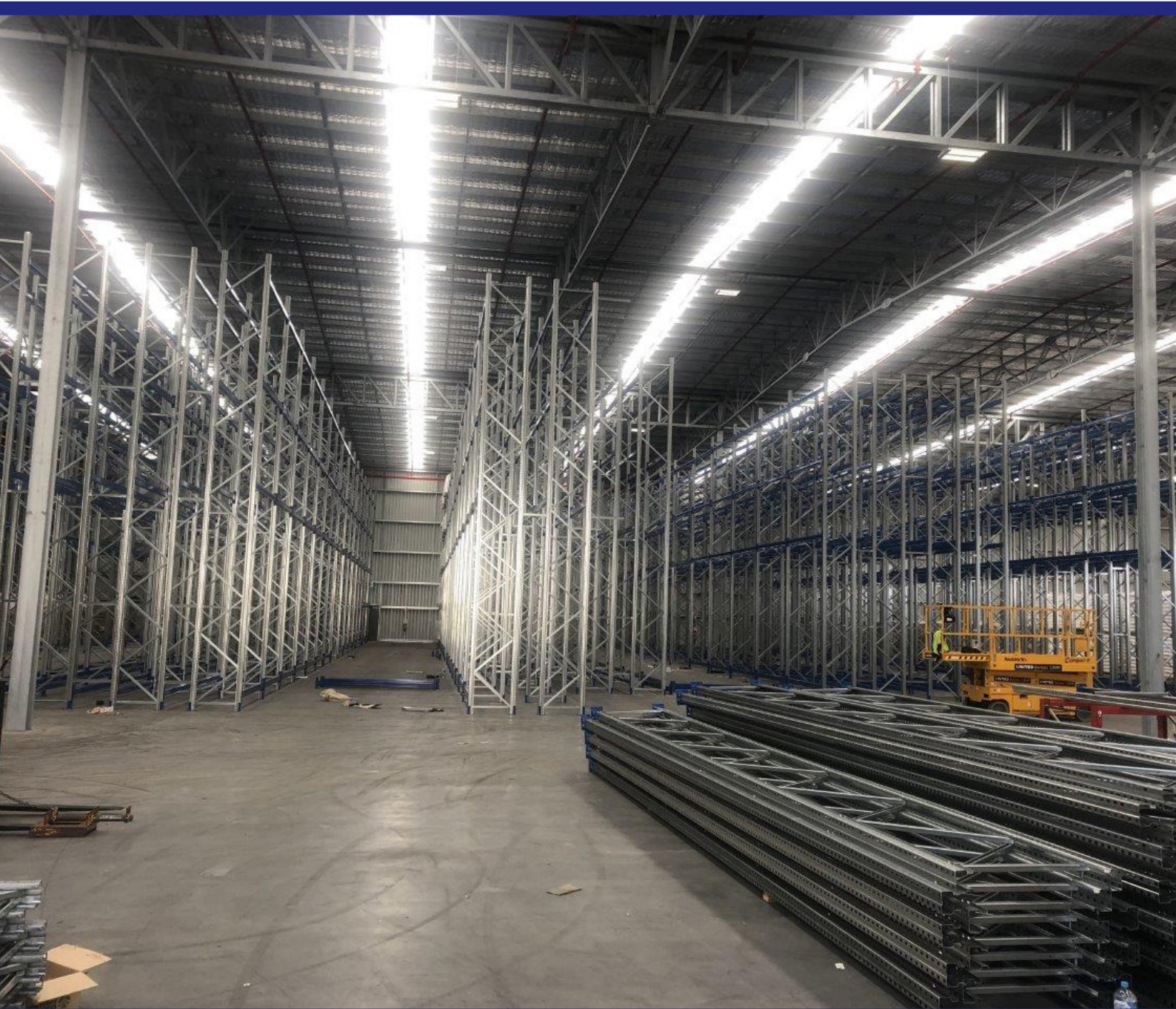
DMD designed and supplied a turnkey racking package for QUBE's new warehouse facility.


KEY PERSONNEL INVOLVED IN PROJECT:

Mark Antonio - Project and Design Management


KEY LEARNINGS FROM PROJECT:

Warehouse design principles that were learnt during the design phase of this project have been applied to future consultations and projects.



 (08) 9410 9400

 sales@dmd.com.au

 6 Renewable Chase
Bibra Lake WA 6163